

Trinity River Corridor Project

- **Upcoming Agenda Items**
- **Possible Funding Scenario
for the Expanded Phase I
Program**

Dallas City Council
December 3, 2003

Summary of Agenda Items

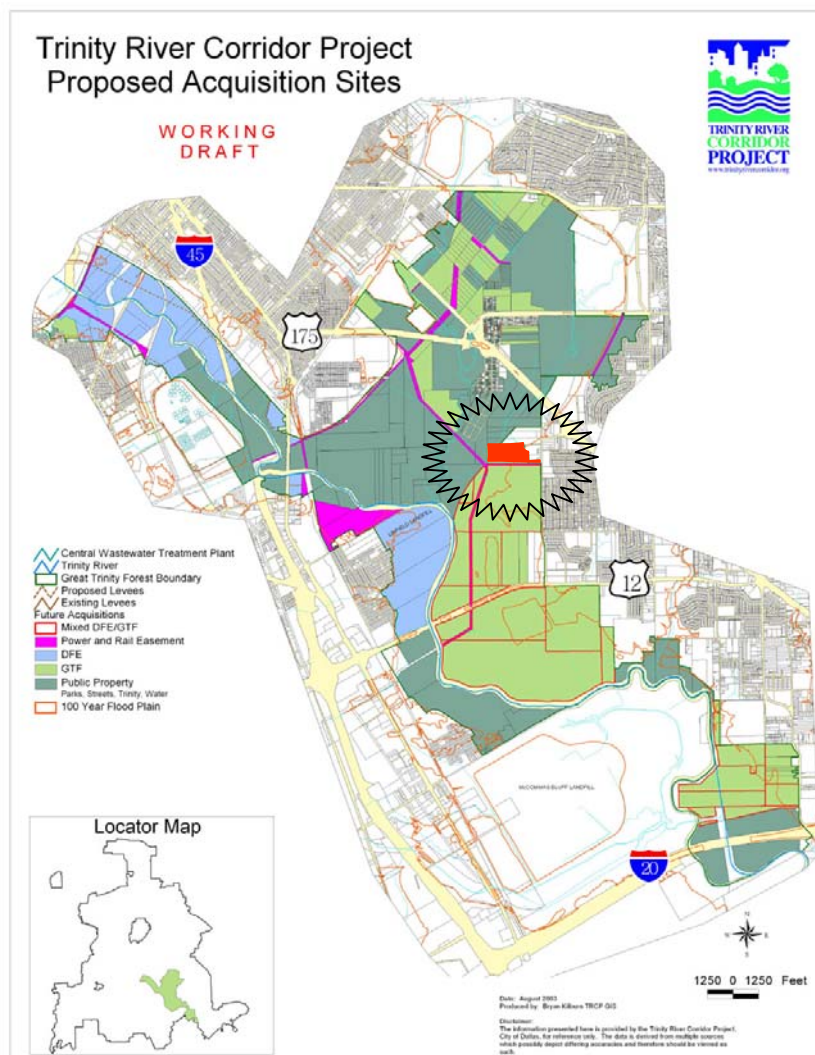
December 8, 2003 Agenda

- Land Acquisition (Consent Agenda items #25, 26 & 27)
- IH-30 Bridge Design (Consent Agenda item #4)
- Balanced Vision Plan adoption (Items for Individual Consideration Agenda Item #98)

Land Acquisitions

Consent Agenda Item #25

- Location: near Pemberton Hill
- Size: ~ 35 acres
- Previous use: Vacant, house
- Purpose for project: Recreation (site of natural spring, potential historic site)



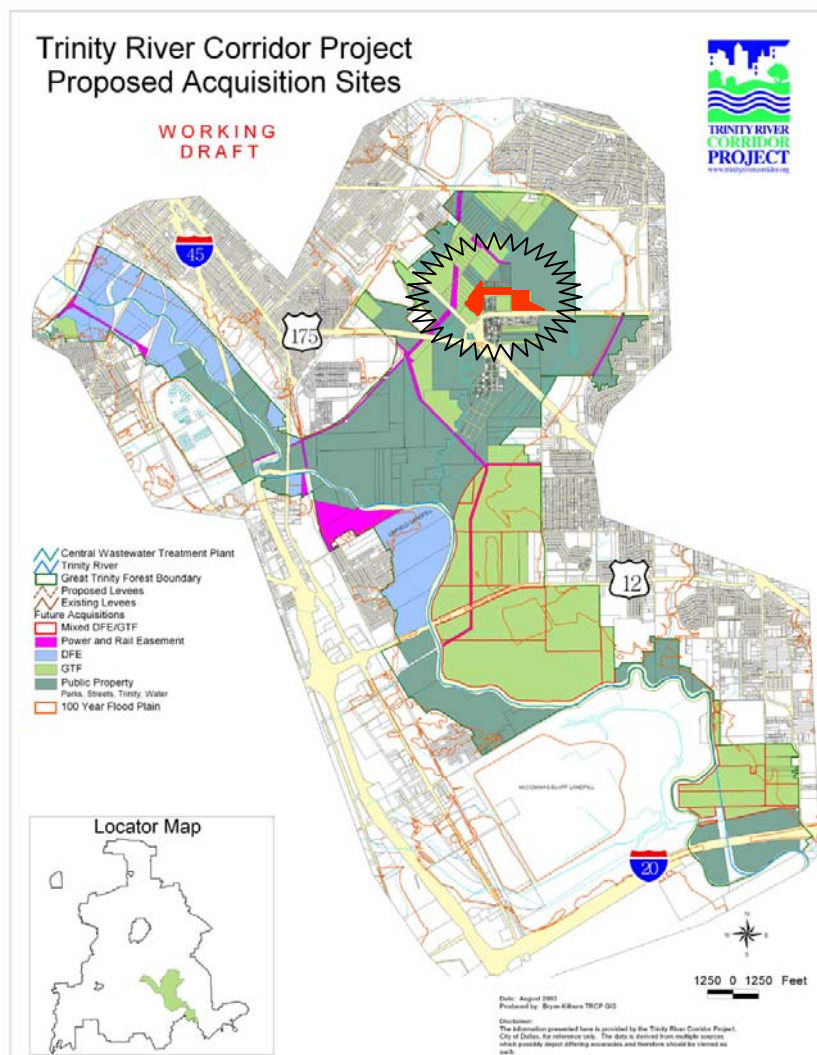
- Status:
Appraisal completed;
offer of \$85,000 made

Land Acquisitions

Consent Agenda Item #26

- Location: Off Bruton Rd.
- Size: ~51 acres
- Previous use: Vacant
- Purpose for project: Recreation (pond)

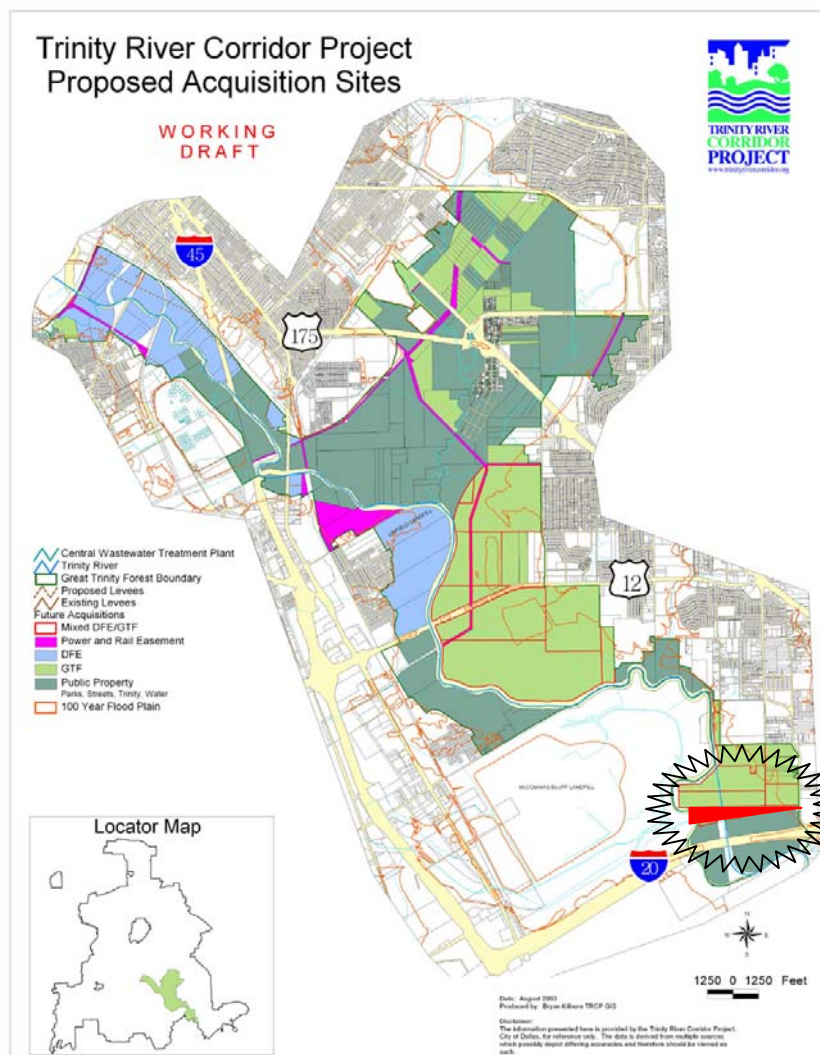
- Status:
Appraisal completed; offer of \$87,500 made



Land Acquisitions

Consent Agenda Item #27

- Location: IH-20 and river
- Size/Cost: ~ 54 acres
- Previous use: Vacant
- Purpose for project: Environmental mitigation, recreation

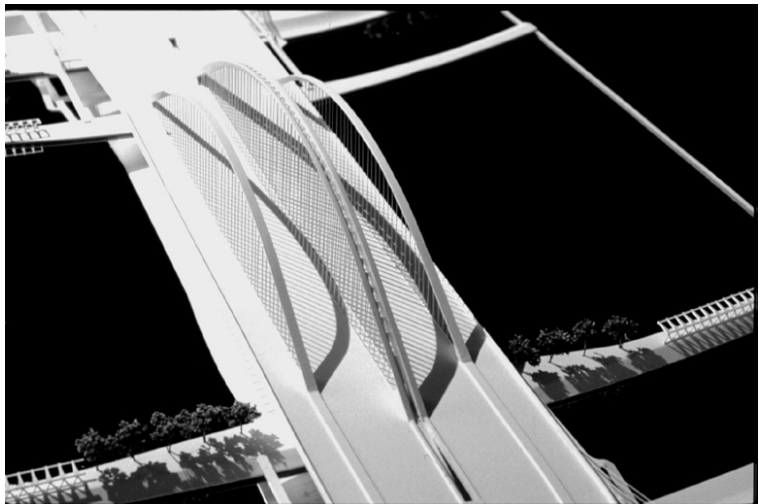


- Council authorized in August 2003; owner rejected initial offer of \$88,000
- City increased offer to \$99,000 in lieu of condemnation procedures 5

IH-30 Signature Bridge Design

(Consent agenda item #4)

- Designed by Santiago Calatrava with local firms:
 - Huitt-Zollars
 - Chiang, Patel & Yerby (MBE)
 - Mas-Tek (MBE)
 - Williams, Russell & Johnson (MBE)
- Total design fee of \$11.8 M to be awarded in phases
- Phase I - \$3 M
 - Will provide bridge layout and schematics
 - TxDOT must approve before continuing with design
- TxDOT must have HOV in service by Fall 2007



Balanced Vision

Plan Adoption

(Individual Consideration Agenda Item #98)

- Resolution adopts “Balanced Vision for the Trinity River” as supplement to previous studies:
 - Master Implementation Plan (MIP)
 - Elm Fork Floodplain Management Plan
 - Great Trinity Forest Master Plan
 - Dallas Floodway Extension EIS
- Balanced Vision Plan for floodway elements (lakes, trails, wetlands, other amenities) takes precedence over MIP floodway elements
- MIP will be conceptual guide for recreational elements not specifically addressed by Balanced Vision Plan
- Releases Corps to further their plan formulation for lakes configuration
- Fundraising can begin for items in Expanded and Ultimate phases

Balanced Vision Plan Adoption (Individual Consideration Agenda Item #98)

- Trinity Parkway toll road Combined-Modified Alignment in Balanced Vision Plan
 - Council authorized including this alignment in ongoing EIS (October 2003)
 - Opportunity to nominate this road for federal “Environmental Streamlining” program (deadline: December 13, 2003)
 - Nomination was not supported by TxDOT last year, due to Urban Design Study revisiting need, alignment for roadway
 - Both NTTA and TxDOT now support submission of this road for program
 - Environmental Streamlining coordinates review process to avoid delays, duplication of efforts and additional costs associated with reviews
 - Council approval of Balanced Vision Plan indicates local support, an important criteria for selection into streamlining program

Trinity River Corridor Project

Possible Funding Scenario for the Expanded Phase I Program

**BALANCED VISION PLAN FOR THE TRINITY RIVER CORRIDOR PROJECT:
EXPANDED PHASE I FUNDING REQUESTS**

The attached provides information concerning a potential roadmap for obtaining incremental funding which incorporates the Expanded Phase I Balanced Vision Plan into Basic Phase I plan implementation over the next decade.

Basic Phase I Funding

- \$1.060 billion worth of project elements implemented over the next decade;
- Can be completed with funds approved in the 1998 bond program combined with anticipated funding from state and federal partners;
- Following funding has been identified:

BASIC PHASE I COMPONENT	ESTIMATED FUNDING (000s)
Flood Protection	\$170,995
Community and Economic Development	\$1,100
Environmental Management and Restoration	\$54,047
Park and Recreation	\$47,456
Transportation	\$786,643
TOTAL BASIC PHASE I FUNDING	\$1,060,241

Expanded Phase I Funding

- Additional \$110 million worth of project elements;
- Consists of elements that are deemed highly desirable and that can be implemented during the first decade of investment;
- Associated costs are not covered through 1998 bond program funding, nor are other funding sources currently anticipated.

Expanded Phase I Funding Request Summary

The attached table summarizes the Expanded Phase I plan components including cost and potential funding sources (see Expanded Phase I Funding Request Summary), including:

- *Federal Appropriations:* specifically additional requests from the Energy and Water, Transportation and HUD/VA/Independent Agency bills;
- *TxDOT:* anticipated to play a role in Expanded Phase I transportation elements;
- *State and Federal grant programs:* specifically the Urban and Community Forest program and the Land and Water Conservation Fund;

- *Private funding opportunities:* including direct grants from individuals, corporations, foundations, special interest non-profits (e.g. Ducks Unlimited); in-kind donations and private commercial development;
- *Naming rights;* and
- *Future bond programs.*

Expanded Phase I Funding Request Timeline

The attached Expanded Phase I Funding Request Timeline represents one possible scenario for achieving the Expanded Phase I plan. There are numerous factors that will influence whichever approach is selected, and one should anticipate modifications over time.

- Includes anticipated requests for Basic Phase I federal funding over the next decade;
- Lists multiple potential funding sources, ranks the sources (e.g. ITEM 5₁, 5₂, etc.) and indicates the recommended primary source (in red).
- Where multiple potential sources have been suggested, there exists the possibility that the total could be split amongst those sources.
- Timing is intended to ensure that all of the Expanded Phase I plan elements are implemented in conjunction with the Basic Phase I plan.

EXPANDED PHASE I FUNDING REQUESTS SUMMARY

EXPANDED PHASE I PLAN COMPONENTS	EST. FUNDING REQUIREMENTS	POTENTIAL FUNDING SOURCES
<i>Flood Protection</i>		
No Expanded Phase I projects	\$0	N/A
Flood Protection Subtotal	\$0	
<i>Environmental Management and Restoration</i>		
ITEM 1: Enhanced habitat in floodway (additional trees and landscaping)	\$1,109,000	Urban and Community Forestry Program; Private donations
ITEM 2: Boardwalks for nature study (Approx. 2000 ft. along upper wetlands)	\$1,133,000	Land & Water Conservation Fund; Private grants (e.g. NWF, Ducks Unltd.)
ITEM 3: Headwaters wetland (supplied by groundwater & effluent)	\$887,000	Land & Water Conservation Fund; Private grants (e.g. NWF, Ducks Unltd.)
ITEM 4: Stormwater wetland at Pavaho Sump	\$998,000	Land & Water Conservation Fund; Private grants (e.g. NWF, Ducks Unltd.)
Environmental Management Subtotal	\$4,127,000	
<i>Park & Recreation</i>		
ITEM 5: Source for flowing lake water (pipeline and pumping station)	\$13,038,000	Appropriations; In-kind donations (pipeline)
ITEM 6: Improvements around urban lake (including 20 ft. wide promenade, additional trees and landscaping)	\$7,220,000	Land and Water Conservation Fund; Private donations; Naming rights
ITEM 7: Water feature between two lakes and enhanced connection between lakes and river (waterfall and outlet to river)	\$2,771,000	Land and Water Conservation Fund; Private donations; Naming rights
ITEM 8: Improvements around natural lake (additional trees and landscaping)	\$147,000	Urban and Community Forestry Program; Private donations; Naming rights
ITEM 9: Park roads and parking (3 mi. of road, 1.5 ac. of parking)	\$11,836,000	Future bond program; Naming rights
ITEM 10: Other infrastructure (electricity, lighting, etc.)	\$4,408,000	Future bond program
ITEM 11: Additional canoe and boat ramps	\$142,000	Land and Water Conservation Fund (state); Private donations; Naming rights
Park & Recreation Subtotal	\$39,562,000	

EXPANDED PHASE I FUNDING REQUESTS SUMMARY

EXPANDED PHASE I PLAN COMPONENTS	EST. FUNDING REQUIREMENTS	POTENTIAL FUNDING SOURCES
<i>Transportation</i>		
ITEM 12: Continental Blvd. (improvements from Industrial Blvd. to IH-35)	\$7,932,000	Future bond program
ITEM 13: Oak Cliff levee top road (w/connections to IH-30 & IH-35)	\$37,105,000	TxDOT; Future bond program
ITEM 14: Lamar Blvd. enhancements	\$10,010,000	Private development; Future bond program
ITEM 15: Widened pedestrian decks (expanded decks or wings)	\$11,498,000	Private development; Future bond program
Transportation Subtotal	\$66,545,000	
<i>Community & Economic Development</i>		
No Expanded Phase I projects	\$0	N/A
Community & Economic Development Subtotal	\$0	
TOTAL EXPANDED PHASE I	\$110,234,000	

EXPANDED PHASE I FUNDING REQUESTS TIMELINE (000s)

Basic Phase I Projects (Federal requests only)	2004	2005	2006	2007	2008	2009	2010	2011	
<i>Energy & Water Appropriations</i>	DFE: \$9,280 UTRFS: \$1,000	DFE: \$20,000 UTRFS: \$1,500	DFE: \$20,000 UTRFS: \$1,500	DFE: \$15,000 Trinity Lakes/Levee Raise: \$1,000	DFE: \$7,000 Trinity Lakes/Levee Raise: \$1,000	DFE: \$7,000 Trinity Lakes/Levee Raise: \$8,000	DFE: \$3,000 Trinity Lakes/Levee Raise: \$7,000	Trinity Lakes/Levee Raise: \$5,900	
<i>Transportation Appropriations</i>	I-30: \$0 I-35: \$925 635: \$800	I-30: \$10,000 I-35: \$6,000 635: TBD	I-30: \$10,000 I-35: TBD 635: TBD	I-30: \$10,000 I-35: TBD 635: TBD	I-30: \$10,000 I-35: TBD 635: TBD	I-30: \$10,000 I-35: TBD 635: TBD	I-30: \$10,000 I-35: TBD 635: TBD	I-35: TBD 635: TBD	I-35: TBD 635: TBD
<i>TEA LU (TEA 21 Reauthorization)</i>		I-30: \$75,000 request over 6 years I-35: \$15,000 request over 6 years 635: \$70,000 request over 6 years	I-30: YR 2 TEA LU Allocation I-35: YR 2 TEA LU Allocation 635: YR 2 TEA LU Allocation	I-30: YR 3 TEA LU Allocation I-35: YR 3 TEA LU Allocation 635: YR 3 TEA LU Allocation	I-30: YR 4 TEA LU Allocation I-35: YR 4 TEA LU Allocation 635: YR 4 TEA LU Allocation	I-30: YR 5 TEA LU Allocation I-35: YR 5 TEA LU Allocation 635: YR 5 TEA LU Allocation	I-30: YR 6 TEA LU Allocation I-35: YR 6 TEA LU Allocation 635: YR 6 TEA LU Allocation		
Expanded Phase I Funding Sources	2004	2005	2006	2007	2008	2009	2010	2011	
<i>Appropriations</i>			ITEM 5 ₁ : Pipeline and pumping station: \$13,038						
<i>TxDOT</i>						ITEM 13 ₁ : Oak Cliff levee top road: \$37,105			
<i>Grants</i>									
Urban & Community Forestry (Dol)						ITEM 8 ₁ : Natural lakes improvements: \$147	ITEM 1 ₁ : Enhanced habitat in floodway: \$1,109		
Land & Water Conservation (State)		ITEM 11 ₃ : Additional canoe and boat ramps: \$142	ITEM 6 ₃ : Urban lake improvements: \$7,220	ITEM 3 ₁ : Headwaters wetland: \$887 ITEM 6 ₃ : Urban lake improvements: \$7,220 ITEM 7 ₃ : Water feature and lake to river connection: \$2,771	ITEM 2 ₂ : Boardwalks for nature study: \$1,133 ITEM 6 ₃ : Urban lake improvements: \$7,220 ITEM 7 ₃ : Water feature and lake to river connection: \$2,771	ITEM 7 ₃ : Water feature and lake to river connection: \$2,771	ITEM 4 ₁ : Stormwater wetland at Pavaho: \$998		

EXPANDED PHASE I FUNDING REQUESTS TIMELINE (000s)

Expanded Phase I Funding Sources (cont.)	2004	2005	2006	2007	2008	2009	2010	2011	
<i>Private funding (cash donations, in-kind donations, private development)</i>		ITEM 11 ₂ : Additional canoe and boat ramps: \$142	ITEM 5 ₂ : Pipeline and pumping station: \$13,038 ITEM 6 ₂ : Urban lake improvements: \$7,220	ITEM 3 ₂ : Headwaters wetland: \$887 ITEM 6 ₂ : Urban lake improvements: \$7,220 ITEM 7 ₂ : Water feature and lake to river connection: \$2,771	ITEM 2 ₁ : Boardwalks for nature study (NWF, Ducks Unltd.): \$1,133 ITEM 6 ₂ : Urban lake improvements: \$7,220 ITEM 7 ₂ : Water feature and lake to river connection: \$2,771	ITEM 7 ₂ : Water feature and lake to river connection: \$2,771 ITEM 8 ₃ : Natural lakes improvements: \$147 ITEM 14 ₁ : Lamar Blvd. enhancements: \$10,010 ITEM 15 ₁ : Widened pedestrian decks: \$11,498	ITEM 1 ₂ : Enhanced habitat in floodway: \$1,109 ITEM 4 ₂ : Stormwater wetland at Pavaho: \$998		
<i>Naming rights</i>		ITEM 11 ₁ : Additional canoe and boat ramps: \$142	ITEM 6 ₁ : Urban lake improvements: \$7,220	ITEM 6 ₁ : Urban lake improvements: \$7,220 ITEM 7 ₁ : Water feature and lake to river connection: \$2,771	ITEM 6 ₁ : Urban lake improvements: \$7,220 ITEM 7 ₁ : Water feature and lake to river connection: \$2,771	ITEM 7 ₁ : Water feature and lake to river connection: \$2,771 ITEM 8 ₂ : Natural lakes improvements: \$147 ITEM 9 ₂ : Park roads and parking: \$11,836			
<i>Future bond program</i>			ITEM 10 ₁ : Other infrastructure (power, lighting): \$4,408 ITEM 12 ₁ : Continental Blvd. improvements: \$7,932 ITEM 14 ₂ : Lamar Blvd. enhancements: \$10,010			ITEM 9 ₂ : Park roads and parking: \$11,836 ITEM 13 ₂ : Oak Cliff levee top road: \$37,105 ITEM 15 ₂ : Widened pedestrian decks: \$11,498			
TOTAL FOR PRIMARY SOURCES		\$142	\$32,598	\$3,658	\$1,133	\$70,596	\$2,107		\$110,234

Appropriations (000s)

2006	Pipeline and Pumping Station	\$13,038
2009	Oak Cliff Levee top road	\$37,105
	Total	\$50,143

* Items in red indicate the recommended primary source for funding

Grants (000s)

2006	Urban Lake Improvements	\$ 7,220
2007	Headwaters Wetlands	\$ 887
	Urban Lake improvements	
	Water feature and lake to river connection	\$ 2,771
2008	Boardwalks for nature study	\$ 1,133
	Urban Lake Improvements	
	Water feature and lake to river connection	
2009	Natural lakes improvements	\$ 147
	Water feature and lake to river connection	
2010	Enhanced habitat in floodway	\$ 1,109
	Storm water wetland in Pavaho	\$ 998
	Total	\$1,256 to \$ 14,265

* Items in red indicate the recommended primary source for funding

Private Funding (000s)

2005	Additional canoe and boat ramps	\$ 142
2006	Pipeline and pumping station Urban Lake improvements	\$ 13,038 \$ 7,220
2007	Headwaters wetland Urban lake improvements Water feature and lake to river connection	\$ 887 \$ 2,771
2008	Boardwalks for nature study (NWF, Ducks Unltd.) Urban lake improvements Water feature and lake to river connection	\$ 1,133
2009	Water feature and lake to river connection Natural lakes improvements Lamar Blvd. enhancements Widened pedestrian decks	 \$ 147 \$10,010 \$11,498
2010	Enhanced habitat in floodway Stormwater wetland at Pavaho	\$ 1,109 \$ 998
	Total	\$ 24,526 to \$ 48,953

* Items in red indicate the recommended primary source for funding

Naming Rights (000s)

2005	Additional canoe and boat ramps	\$ 142
2006	Urban Lake improvements	\$ 7,220
2007	Urban Lake improvements Water feature and lake to river connection	\$ 2,771
2008	Urban Lake improvements Water feature and lake to river connection	
2009	Water feature and lake to river connection	
2010	Natural Lakes improvements	\$ 147
	Park roads and parking	\$ 11,836
	Total \$10,133 to \$ 22,116	

* Items in red indicate the recommended primary source for funding

Future Bond Programs (000s)

2006	Other infrastructure (power, lighting)	\$ 4,408
	Continental Blvd. Improvements	\$ 7,932
	Lamar Blvd. Enhancements	\$ 10,010
2009	Park roads and parking	\$ 11,836
	Oak Cliff Levee top road	\$ 37,105
	Widened Pedestrian decks	\$ 11,498
	Total	\$24,176 to \$ 82,789

* Items in red indicate the recommended primary source for funding